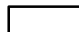




Legende

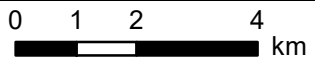
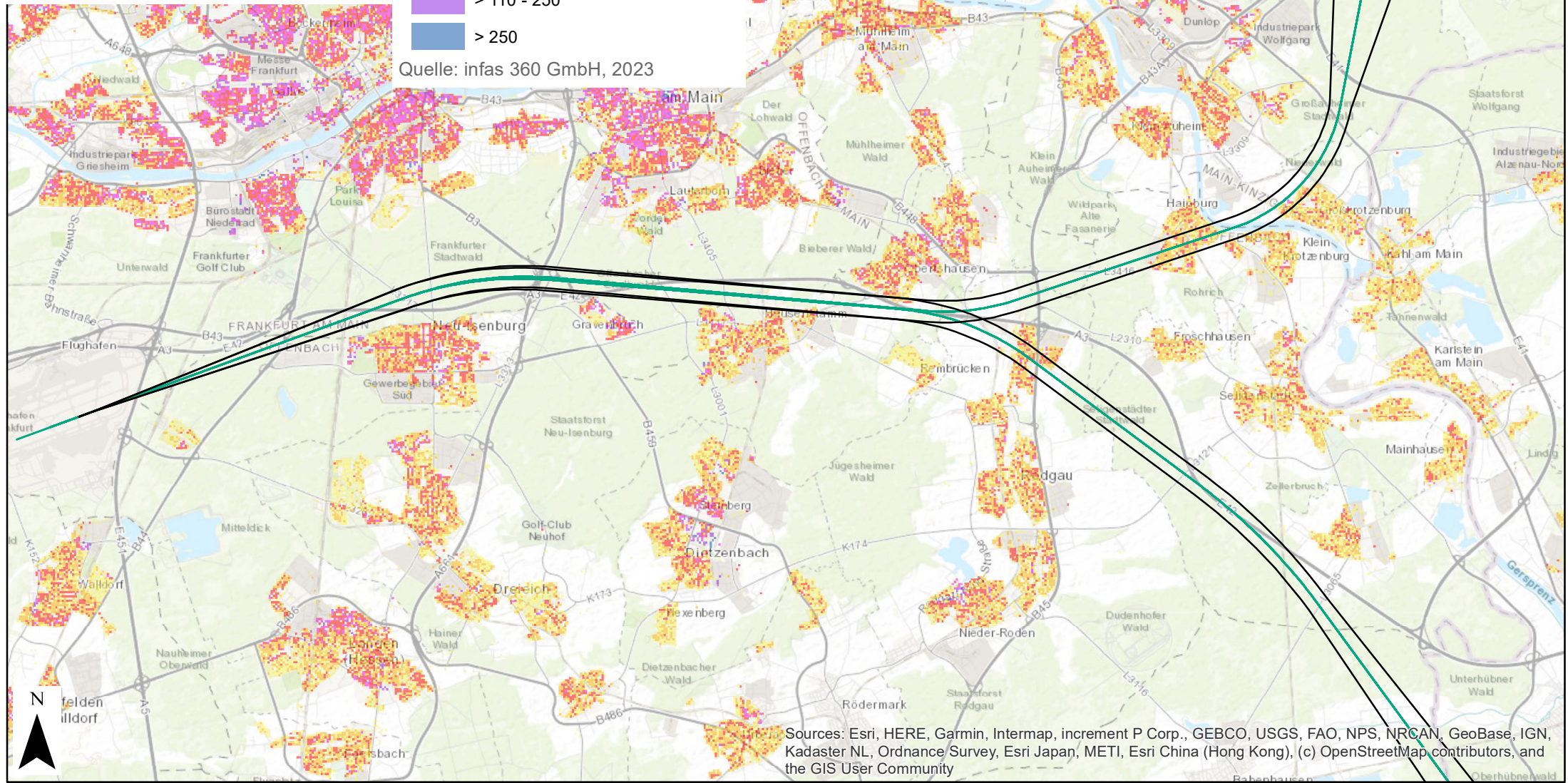
-  SegApp RNP X von KUGUK auf 25L *
-  SegApp RNP X von ORVIV auf 25L *
-  SegApp RNP X von KUGUK auf 25L
-  SegApp RNP X von ORVIV auf 25L

* es handelt sich hier um die AzB-Korridore

Bevölkerungsdichte (Personen/50 m x 50 m)

-  ≤ 5
-  > 5 - 10
-  > 10 - 20
-  > 20 - 50
-  > 50 - 110
-  > 110 - 250
-  > 110 - 250
-  > 250

Quelle: infas 360 GmbH, 2023



Maßstab 1:125.000

Sources: Esri, HERE, Garmin, Intermap, increment P Corp., GEBCO, USGS, FAO, NPS, NRCAN, GeoBase, IGN, Kadaster NL, Ordnance Survey, Esri Japan, METI, Esri China (Hong Kong), (c) OpenStreetMap contributors, and the GIS User Community